



FIRST FLOOR STUDIO PRICE CHART

Erie Labor Temple // Working list compiled from our first-floor studio planning and pricing discussions.
Includes storefront, add-on rooms, tenant studios, and the BOOKFORGE ground-floor studio valuation.

STUDIO	SQUARE FOOTAGE	MONTHLY PRICE
Studio #101	173 SF	\$475/mo
Studio #102	108 SF	\$125/mo add-on; \$250/mo standalone*
Studio #103	144 SF	\$250/mo
Studio #105	108 SF	\$125/mo add-on; \$250/mo standalone*
Studio #106	~500 SF**	\$200/mo current tenant rate
Studio #107	~2,000 SF***	\$1,050/mo listing value
Studio #109	61 SF	\$125/mo

* #102 and #105 were treated as compromised-access/add-on rooms in the pricing model. ** #106 square footage is tied to the earlier Sharon Smith Metal Arts first-floor allocation and should be field-verified. *** #107 reflects the broader BOOKFORGE ground-floor working studio/public-interface area; listing value used for valuation, not necessarily owner-occupied rent.

Art Works Here. // Work Under Voltage.



SECOND FLOOR STUDIO PRICE CHART

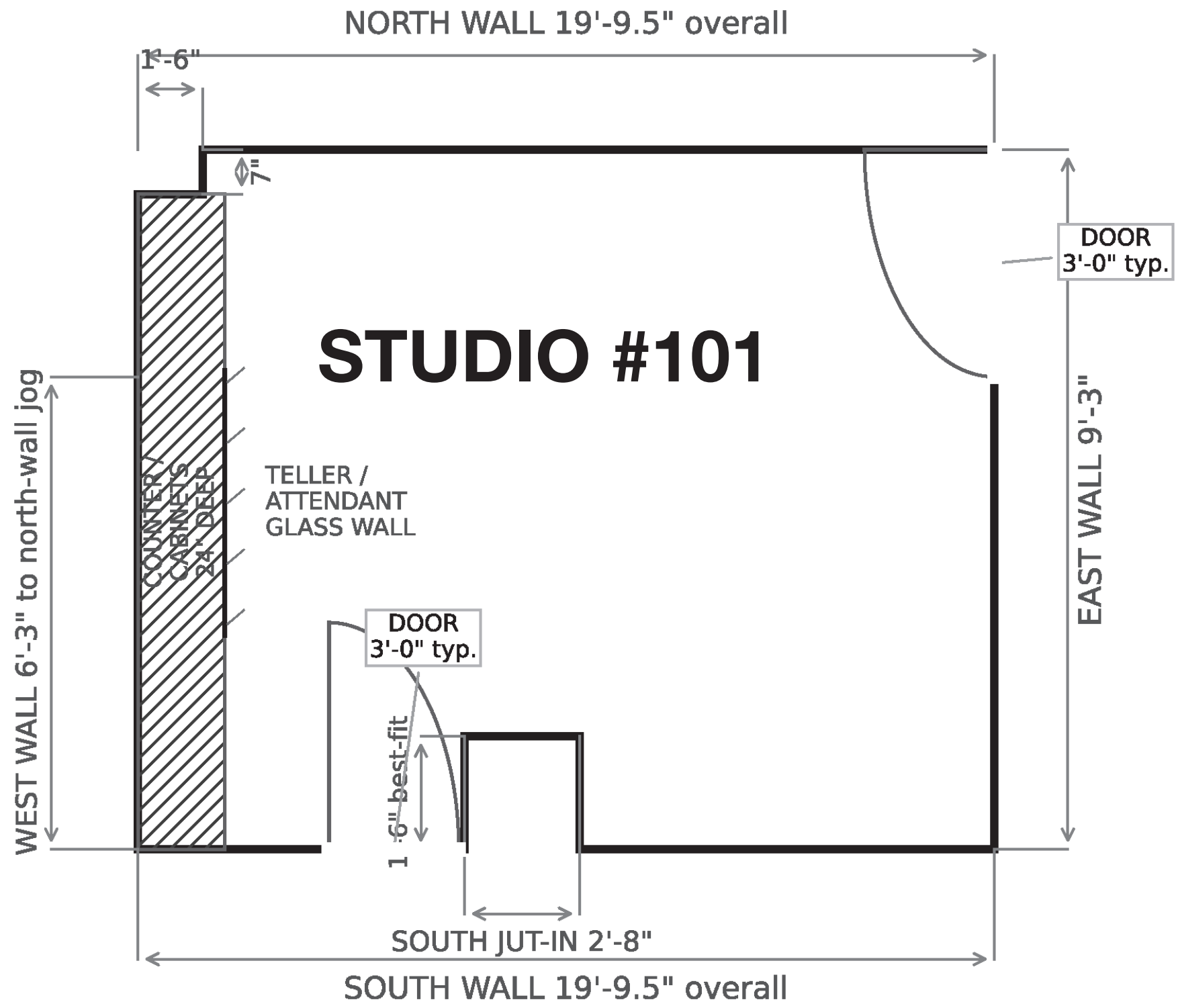
Erie Labor Temple // Working list compiled from our studio planning and pricing discussions.

Includes confirmed second-floor studios plus reconstructed square footage for the additional rooms we priced in chat.

STUDIO	SQUARE FOOTAGE	MONTHLY PRICE
Studio #200	~437 SF	\$875/mo
Studio #201	~556 SF	\$1,050/mo
Studio #202	138 SF	\$275/mo
Studio #203	149 SF	\$250/mo
Studio #207	273 SF	\$450/mo
Studio #209	~380 SF*	\$625/mo
Studio #210	291 SF	\$475/mo
Studio #211	~350 SF*	\$575/mo
Studio #212	~145 SF*	\$285/mo
Studio #214	~145 SF*	\$285/mo

* Approximate square footage reconstructed from our planning and studio drawing discussions.

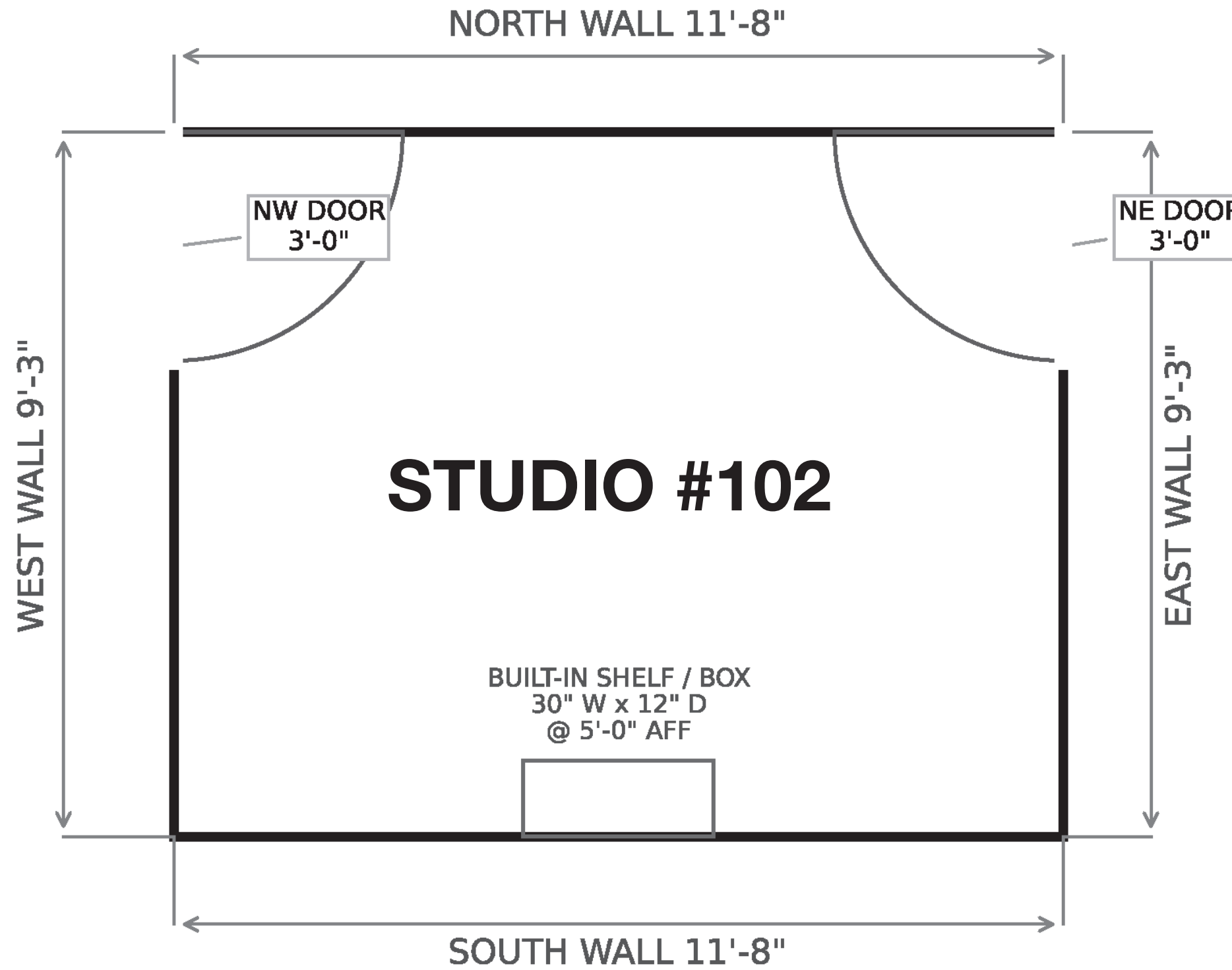
Art Works Here. // Work Under Voltage.



NOTES

All dimensions shown are approximate.
 Approx. overall area 178 sq ft
 West Built-ins:
 24" counter / cabinet run
 Historic features:
 Approx. 42" glazed teller wall section
 from approx. 4' counter height to ceiling.
 Door shown as standard 3' 0" single leaf.
 Window shown as standard 3' - 0" wide opening.

PLAN VIEW	
Studio 101 Erie Labor Temple Approximate field demenions	SCALE 1:24



NOTES

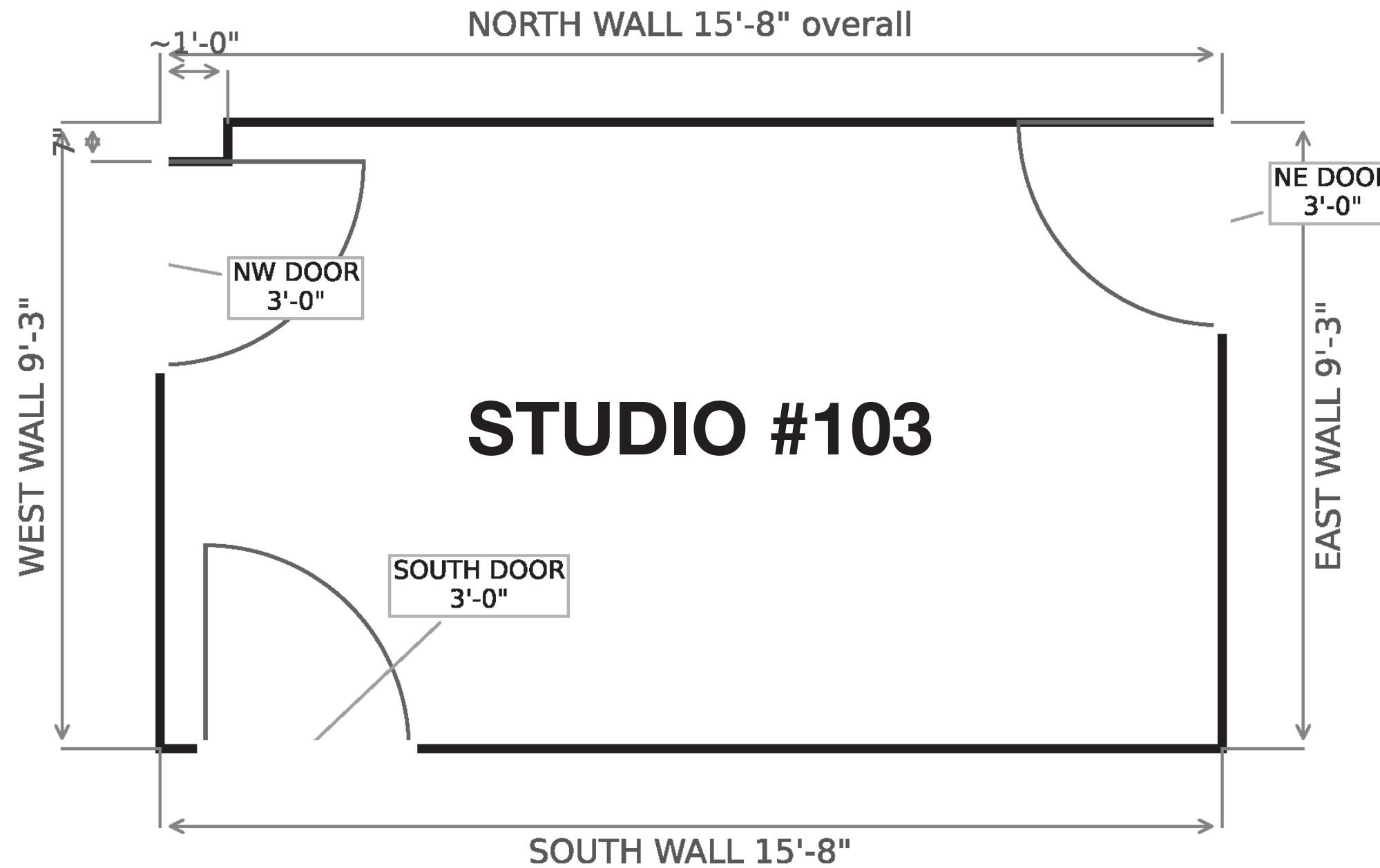
- All dimensions shown are approximate.
- Approx. overall area 108 sq ft
- Built-in South wall shelf
- Door shown as standard 3' 0" single leaf.
- Window shown as standard 3' - 0" wide opening.

PLAN VIEW	
Studio 102 Erie Labor Temple Approximate field demenions	SCALE 1:24



NOTES

All dimensions shown are approximate.
Approx. overall area 144 sq ft
Door shown as standard 3' 0" single leaf.
Window shown as standard 3' - 0" wide opening.

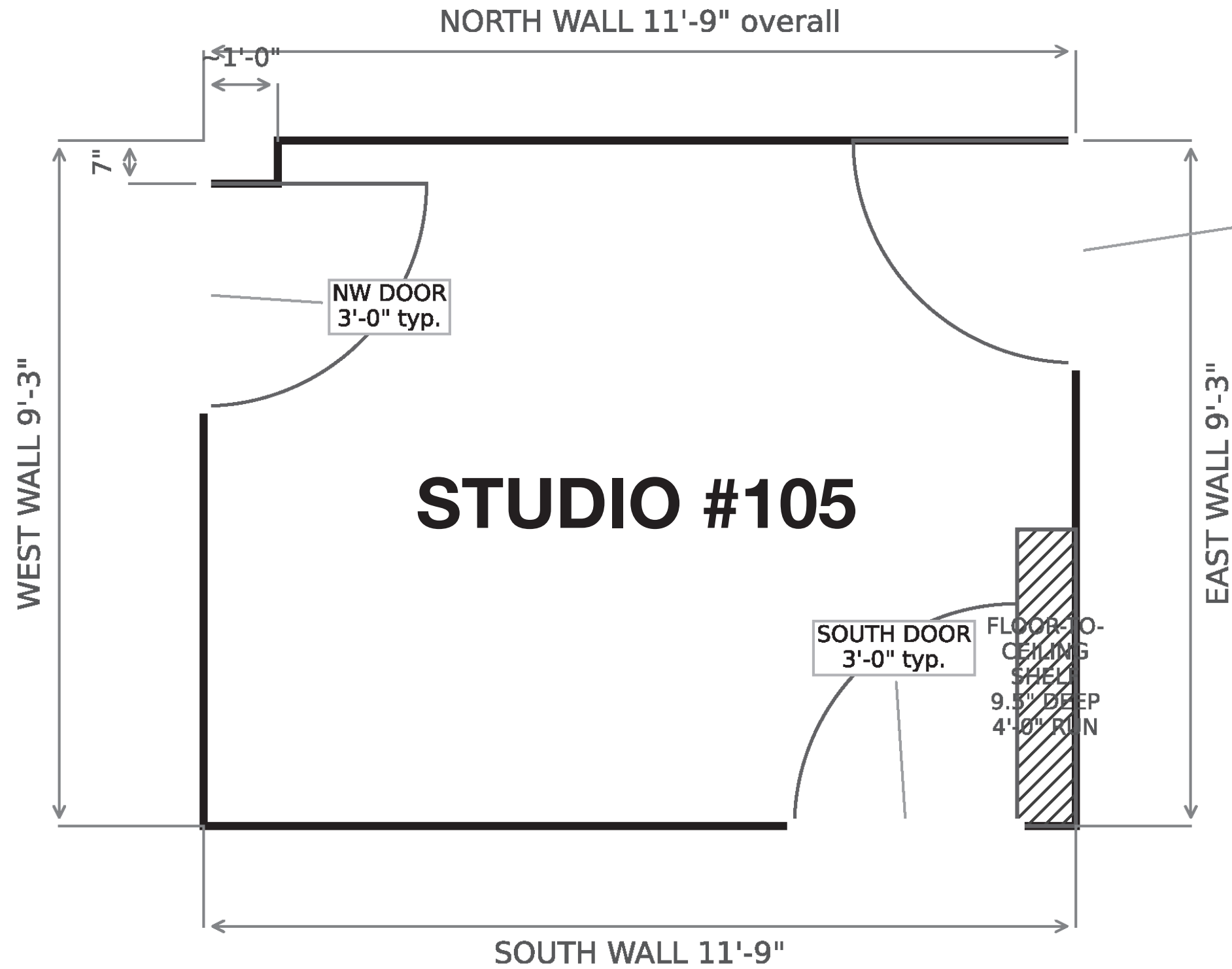


PLAN VIEW	
Studio 103 Erie Labor Temple Approximate field demenions	SCALE 1:24

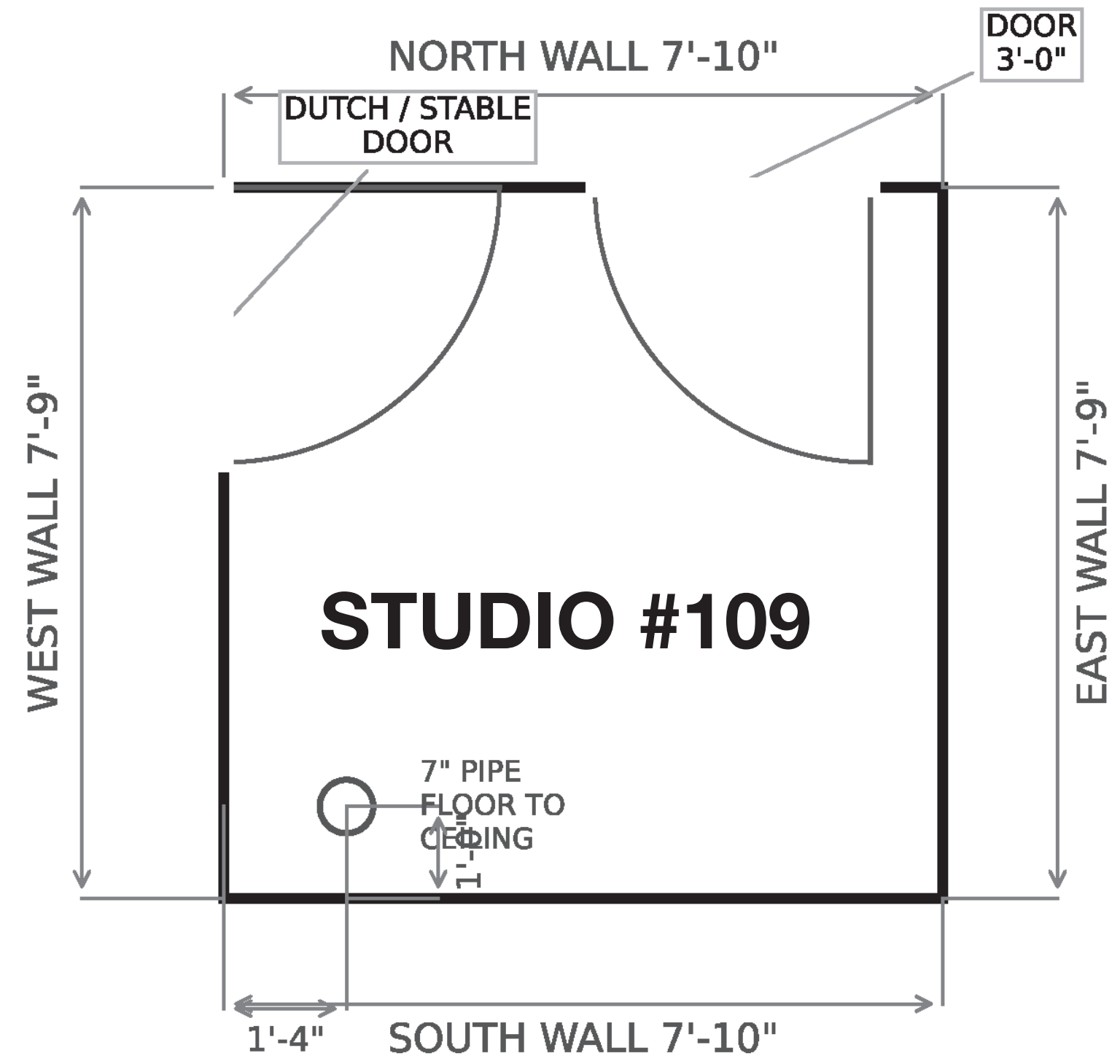


NOTES

All dimensions shown are approximate.
 Approx. overall area 108 sq ft
 Built-in floor-to-ceiling shelf.
 Door shown as standard 3' 0" single leaf.
 Window shown as standard 3' - 0" wide opening.



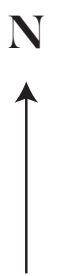
PLAN VIEW	
Studio 105 Erie Labor Temple Approximate field demenions	SCALE 1:24



NOTES

All dimensions shown are approximate.
 Approx. overall area 61 sq ft
 Status: Furnished boardroom layout
 West wall Dutch // Stable door
 Floor-to-ceiling pipe
 Door shown as standard 3' 0" single leaf.
 Window shown as standard 3' - 0" wide opening.

PLAN VIEW	
Studio #109 Erie Labor Temple Approximate field demenions	SCALE 1:24

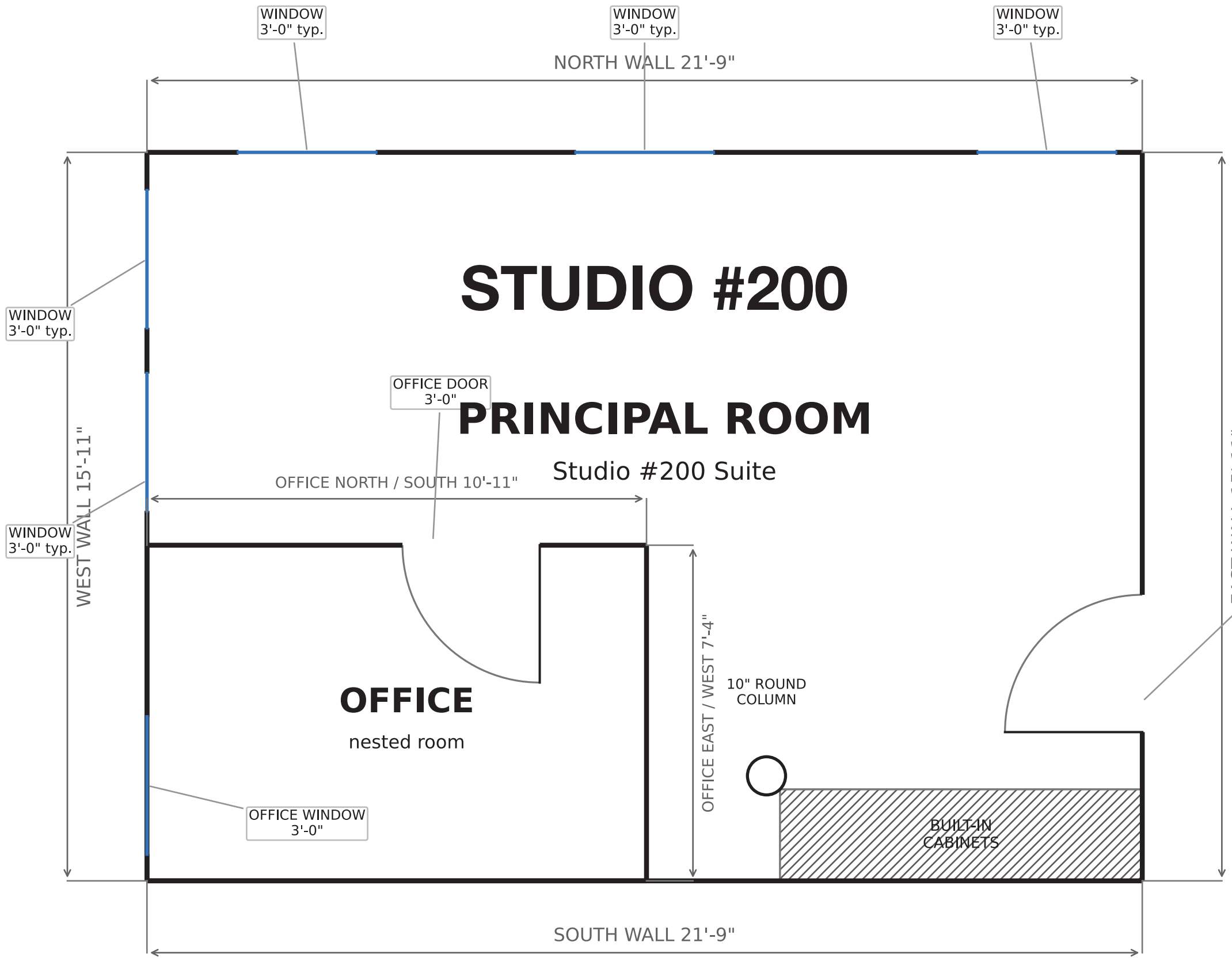


STUDIO #200

PRINCIPAL ROOM

Studio #200 Suite

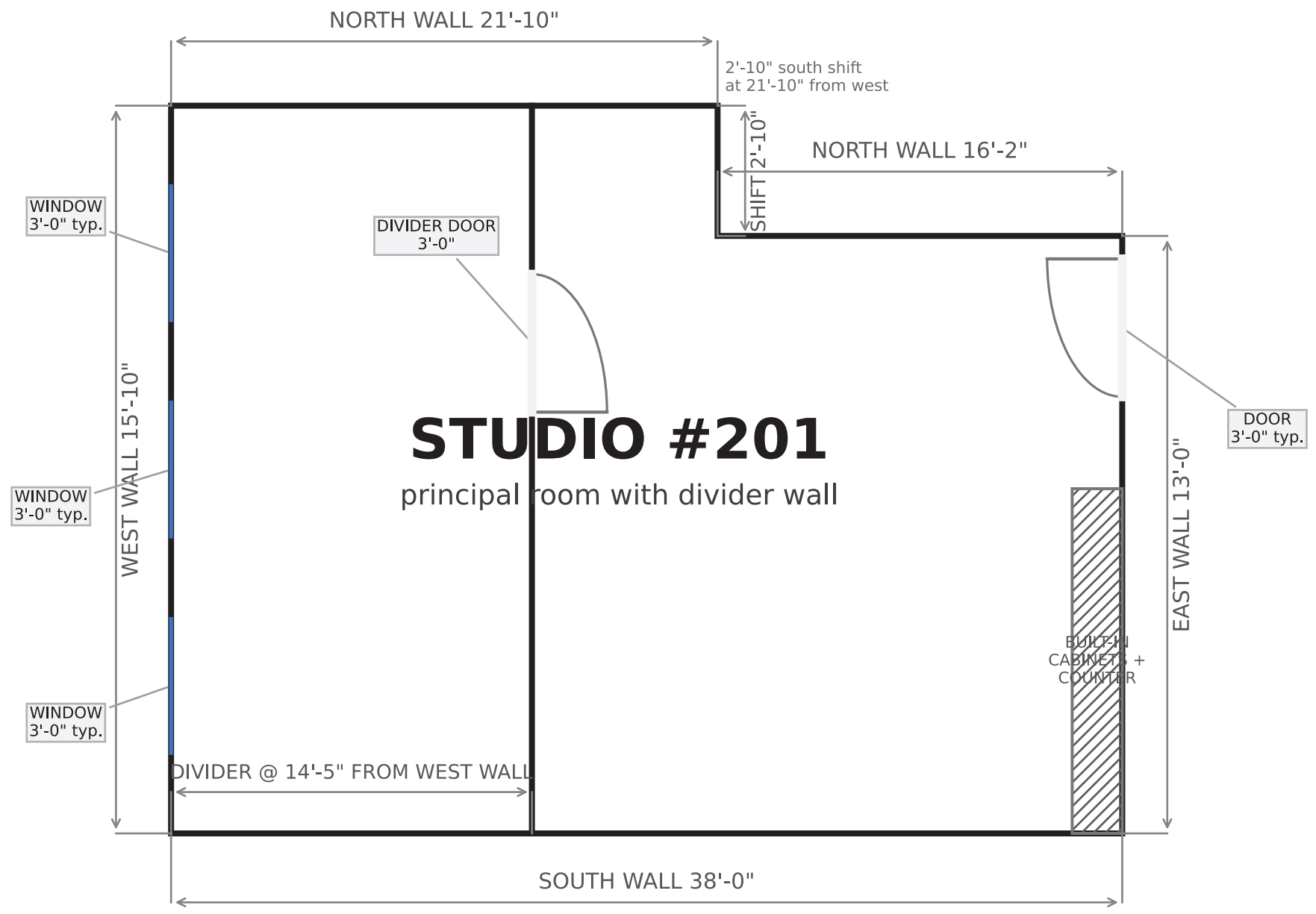
OFFICE
nested room



NOTES

- All dimensions shown are approximate.
- Principal room Approx. overall area 346 sq ft
- Office room Approx. overall area 80 sq ft
- Approx. overall area 426 sq ft
- Built-ins at southeast corner.
- Round 10" column is a decorative coat hanger
- Door shown as standard 3' 0" single leaf.
- Window shown as standard 3' - 0" wide opening.

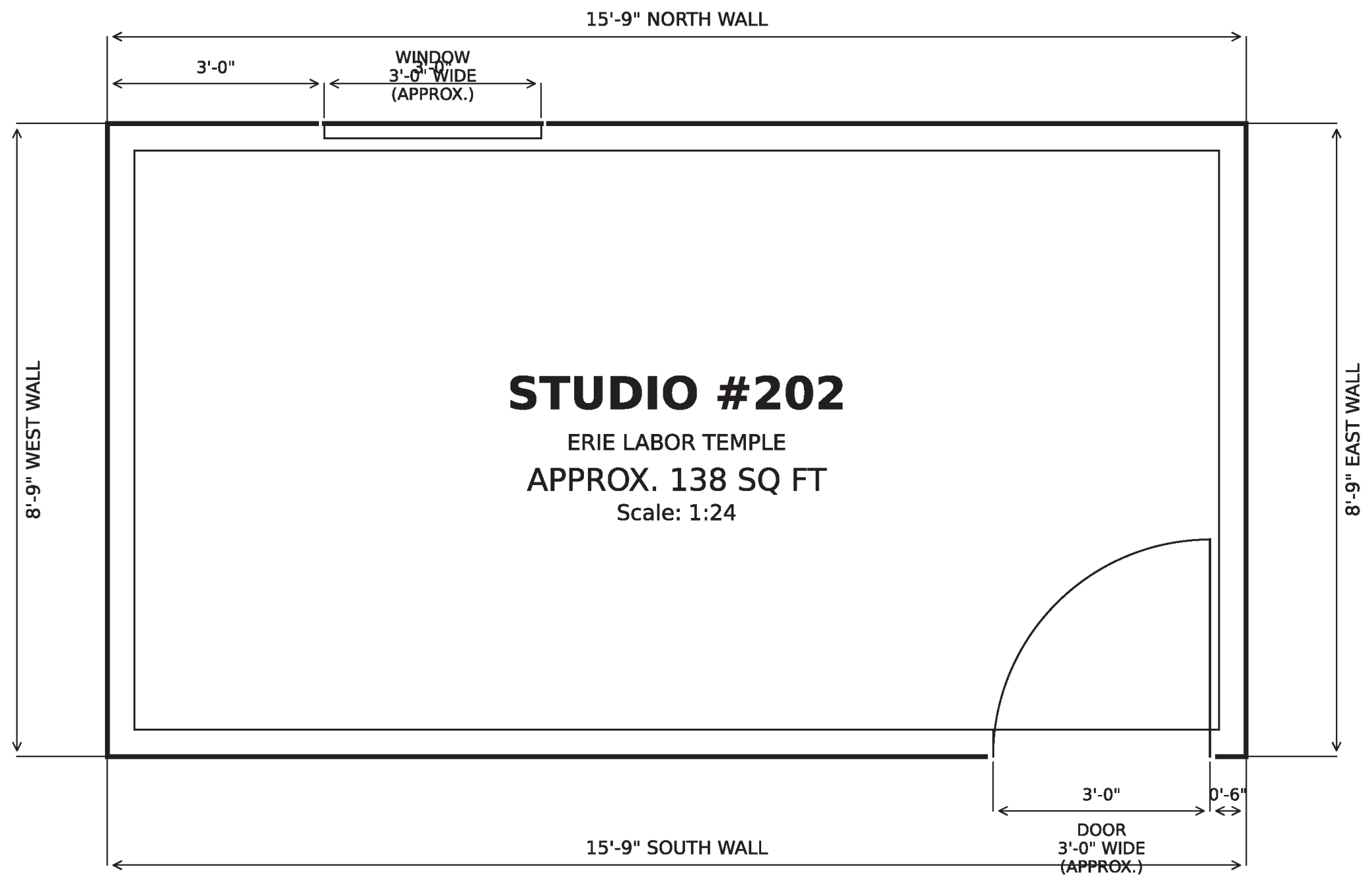
PLAN VIEW	
Studio 200 Erie Labor Temple Approximate field demenions	SCALE 1:24



NOTES

All dimensions shown are approximate.
 Approx. overall area 556 sq ft
 East wall includes 7' 6" built-in cabinets & countertops at the southeast corner.
 Door shown as standard 3' 0" single leaf.
 Window shown as standard 3' - 0" wide opening.

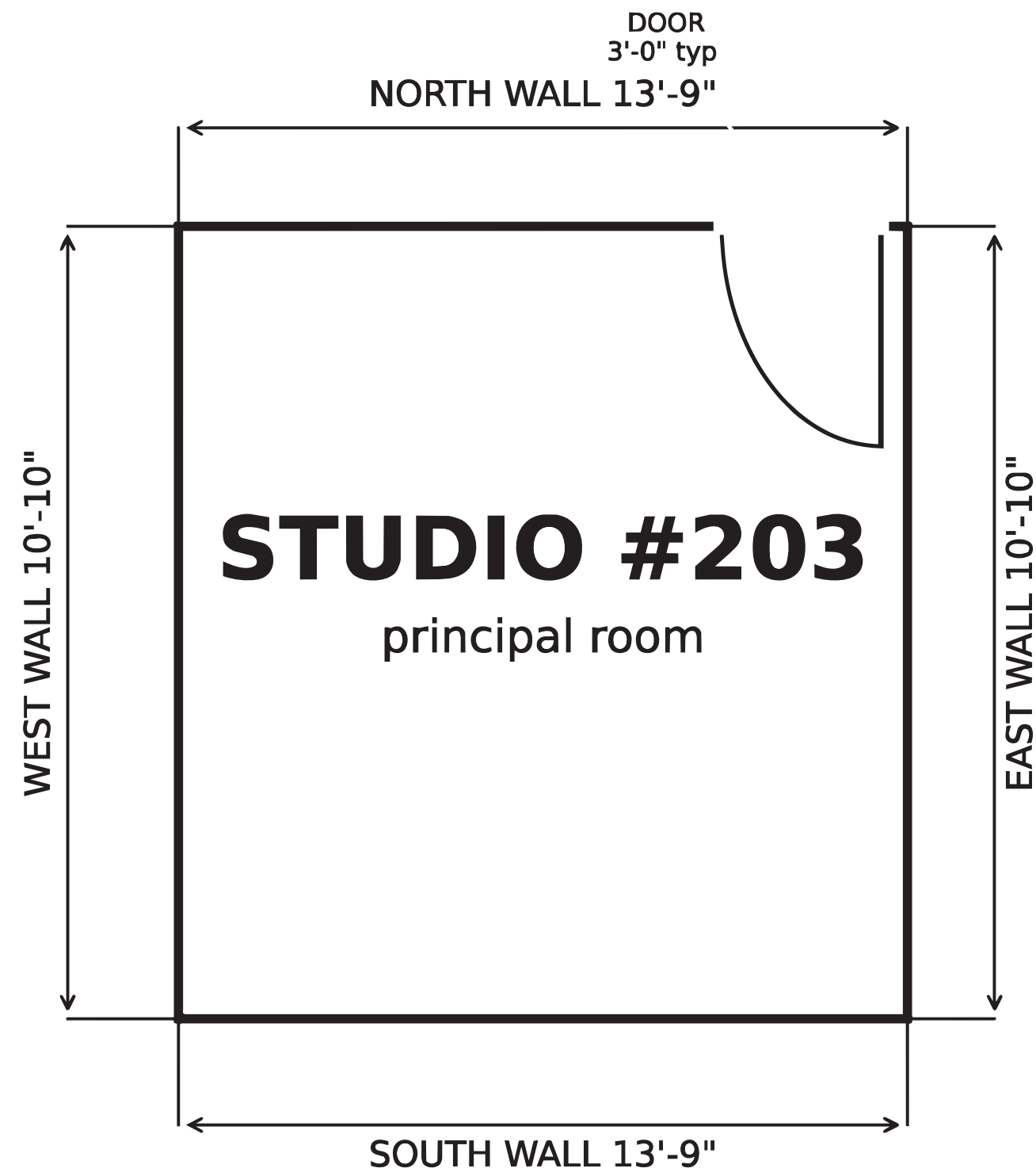
PLAN VIEW	
Studio 201 Erie Labor Temple Approximate field demenions	SCALE 1:24



NOTES

All dimensions shown are approximate.
 Approx. overall area 138 sq ft
 Door shown as standard 3' 0" single leaf.
 Window shown as standard 3' - 0" wide opening.

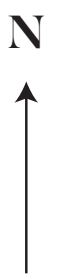
PLAN VIEW	
Studio 202 Erie Labor Temple Approximate field demenions	SCALE 1:24



NOTES

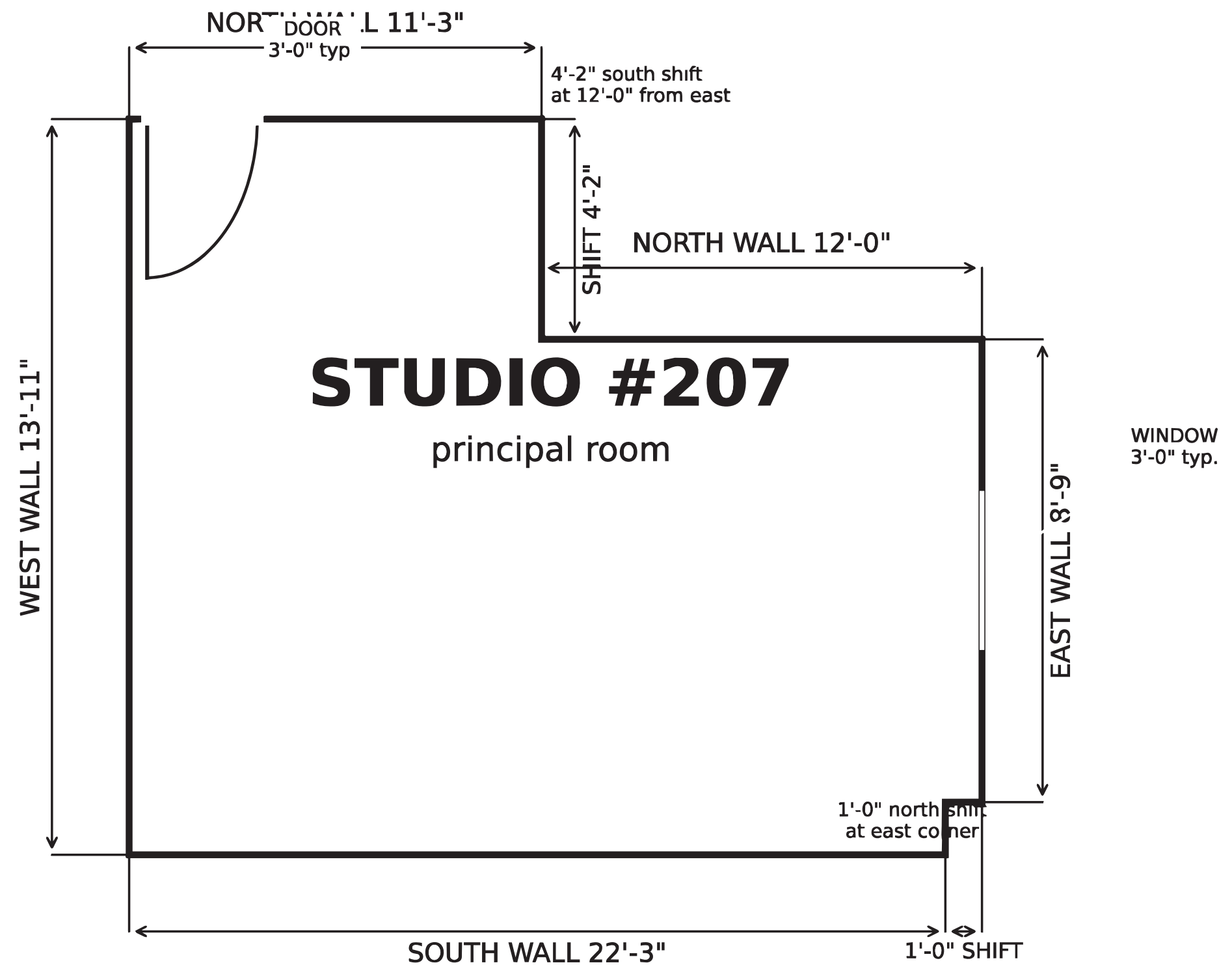
All dimensions shown are approximate.
Approx. overall area 149 sq ft
Door shown as standard 3' 0" single leaf.
Window shown as standard 3' - 0" wide opening.

PLAN VIEW	
Studio 203 Erie Labor Temple Approximate field demenions	SCALE 1:24



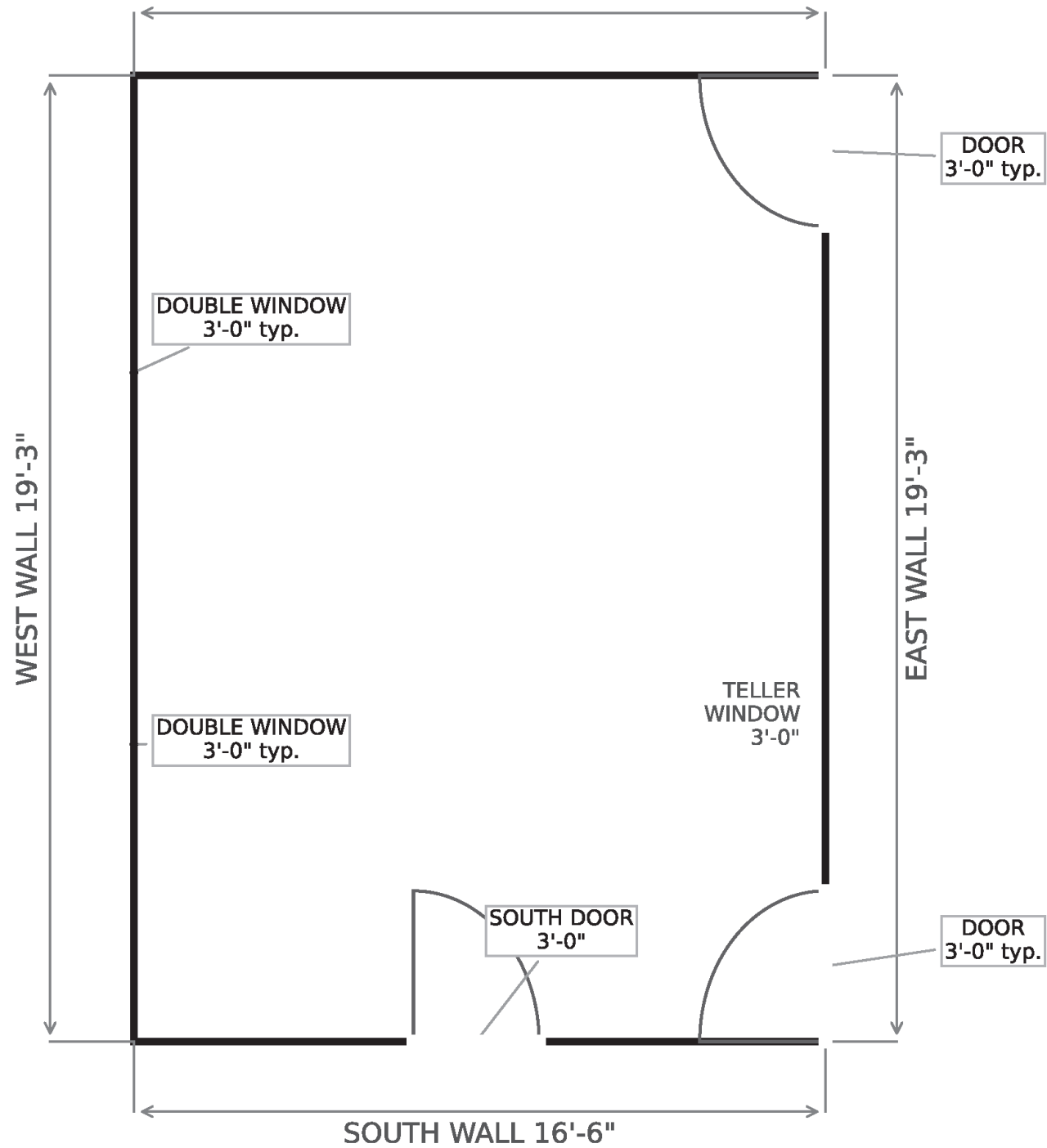
NOTES

All dimensions shown are approximate.
 Approx. overall area 273 sq ft
 Door shown as standard 3' 0" single leaf.
 Window shown as standard 3' - 0" wide opening.



PLAN VIEW	
Studio 207 Erie Labor Temple Approximate field demenions	SCALE 1:24

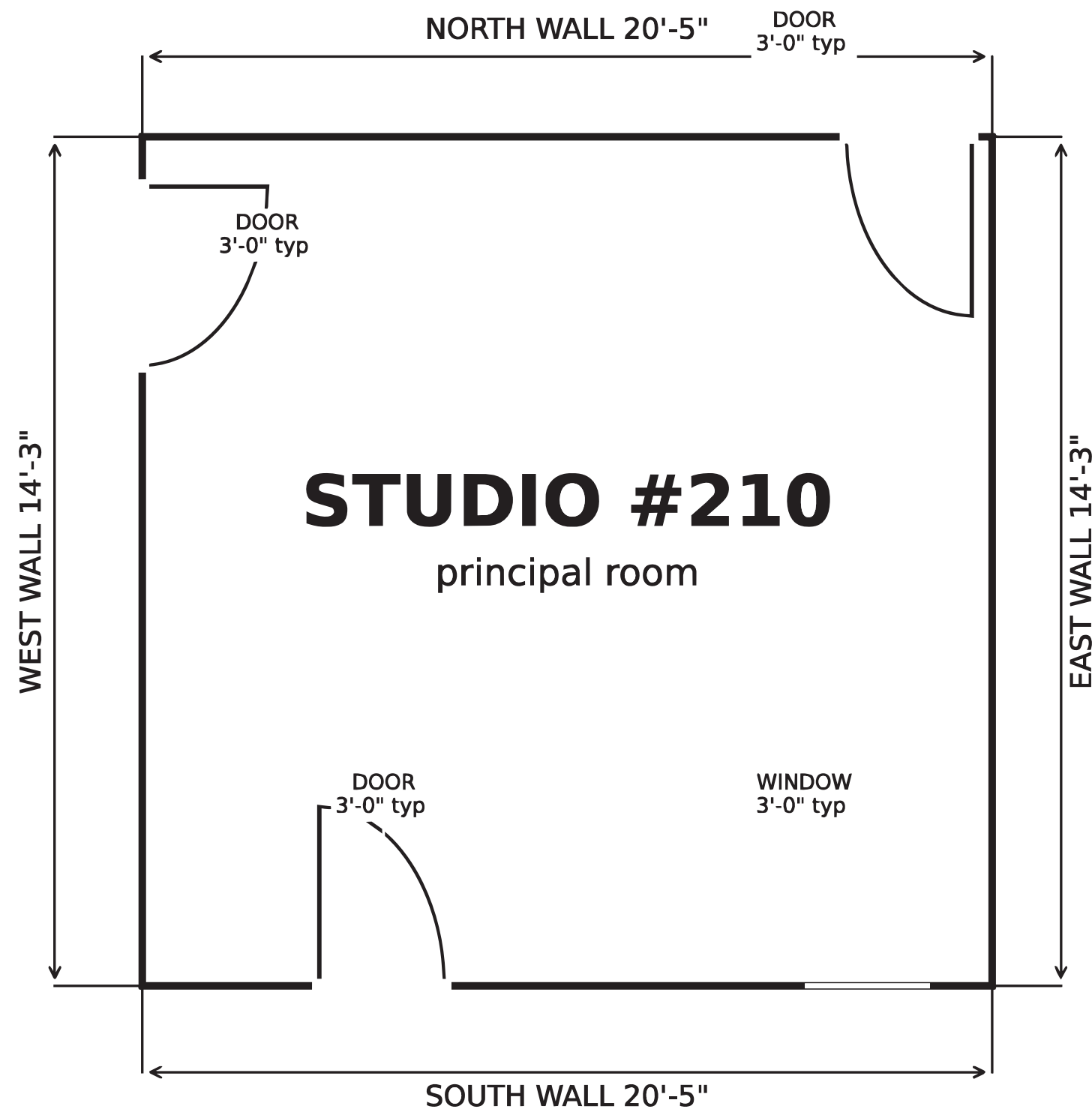
STUDIO #209



NOTES

All dimensions shown are approximate.
 Approx. overall area 318 sq ft
 Door shown as standard 3' 0" single leaf.
 Window shown as standard 3' - 0" wide opening.

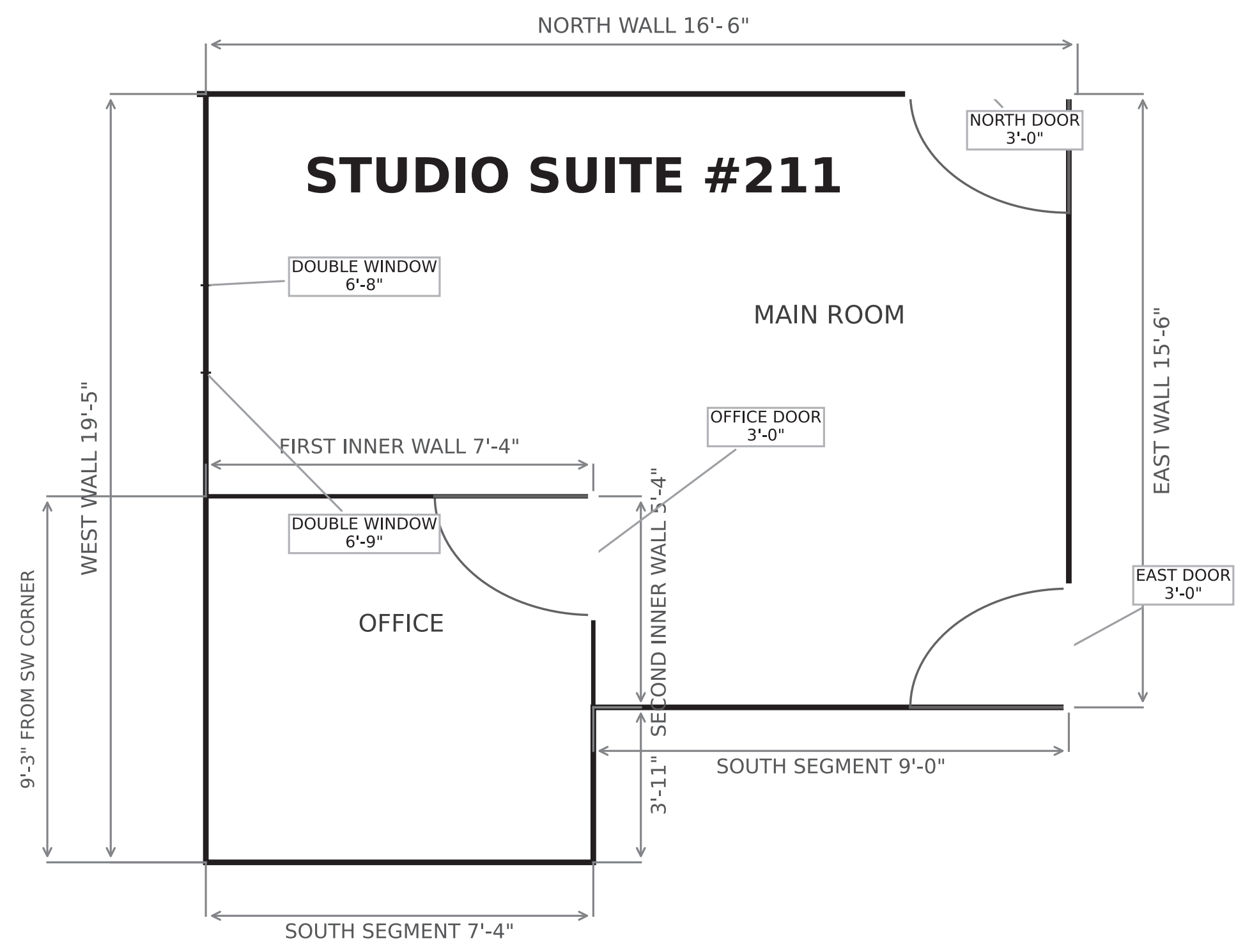
PLAN VIEW	
Studio 209 Erie Labor Temple Approximate field demenions	SCALE 1:24



NOTES

All dimensions shown are approximate.
Approx. overall area 291 sq ft
Door shown as standard 3' 0" single leaf.
Window shown as standard 3' - 0" wide opening.

PLAN VIEW	
Studio 210 Erie Labor Temple Approximate field demenions	SCALE 1:24



NOTES

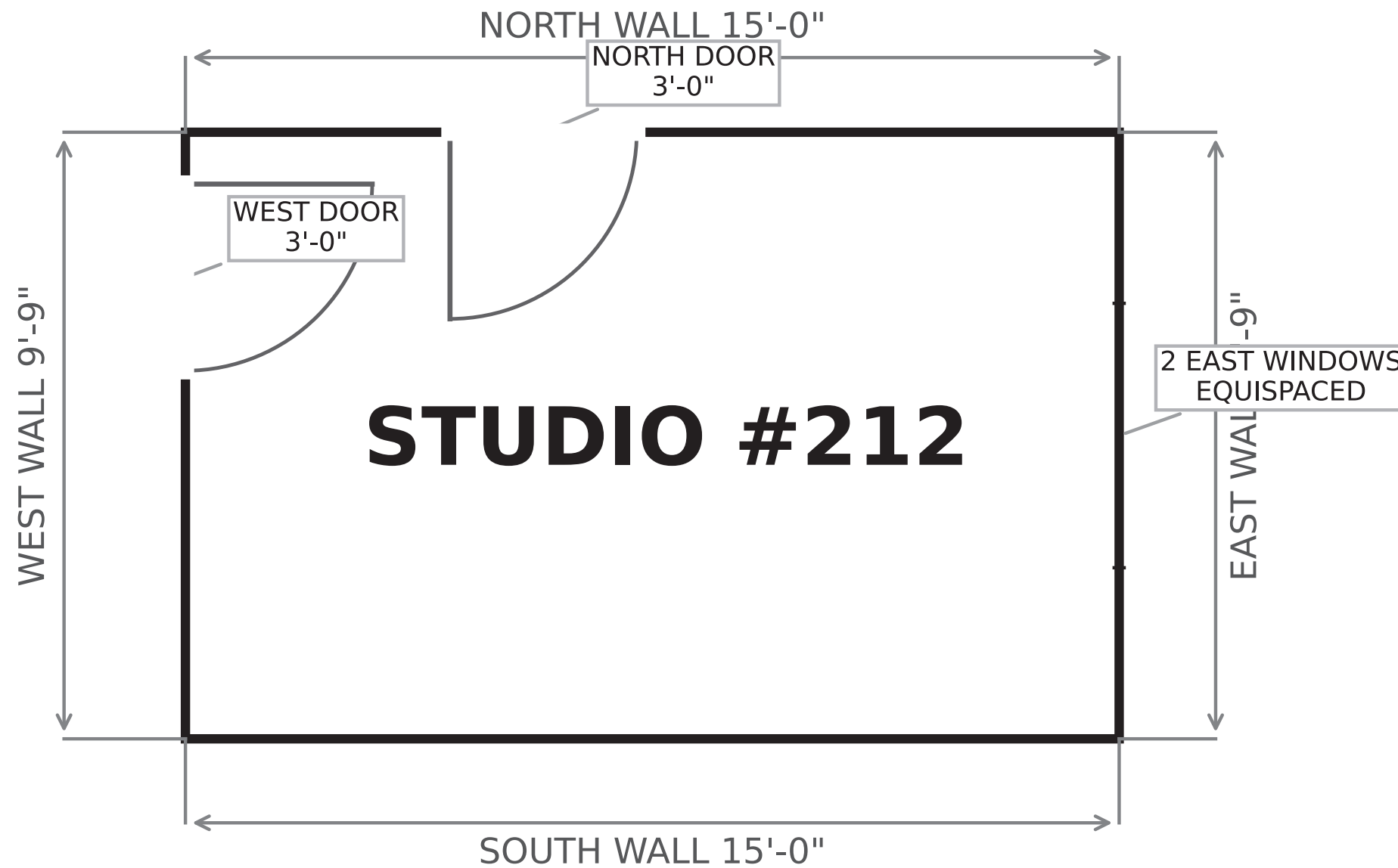
All dimensions shown are approximate.
 Approx. overall area 282 sq ft
 Door shown as standard 3' 0" single leaf.
 Window shown as standard 3' - 0" wide opening.

PLAN VIEW	
Studio 211 Erie Labor Temple Approximate field demenions	SCALE 1:24



NOTES

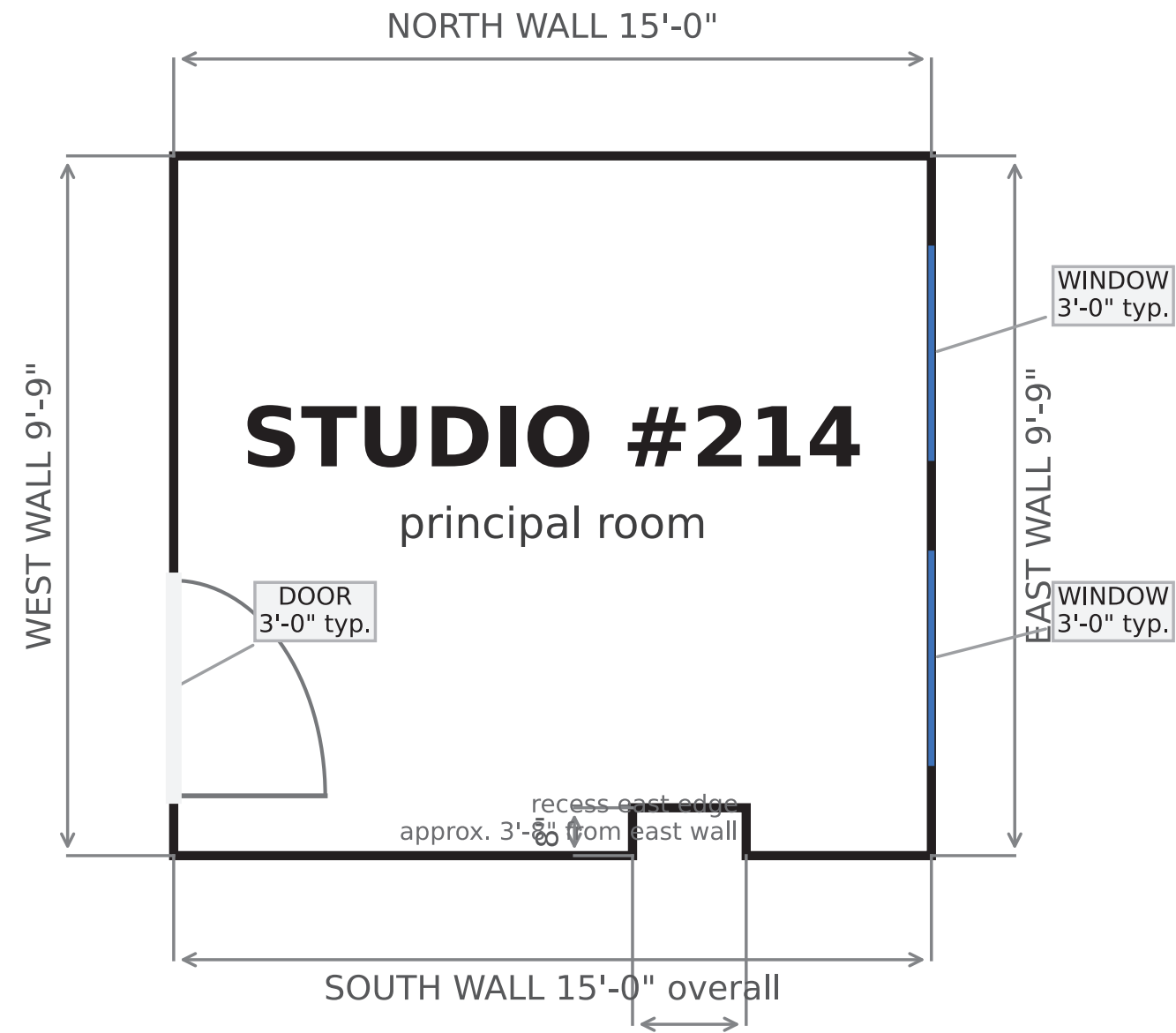
All dimensions shown are approximate.
Approx. overall area 146 sq ft
Door shown as standard 3' 0" single leaf.
Window shown as standard 3' - 0" wide opening.



PLAN VIEW

Studio #212
Erie Labor Temple
Approximate field demenions

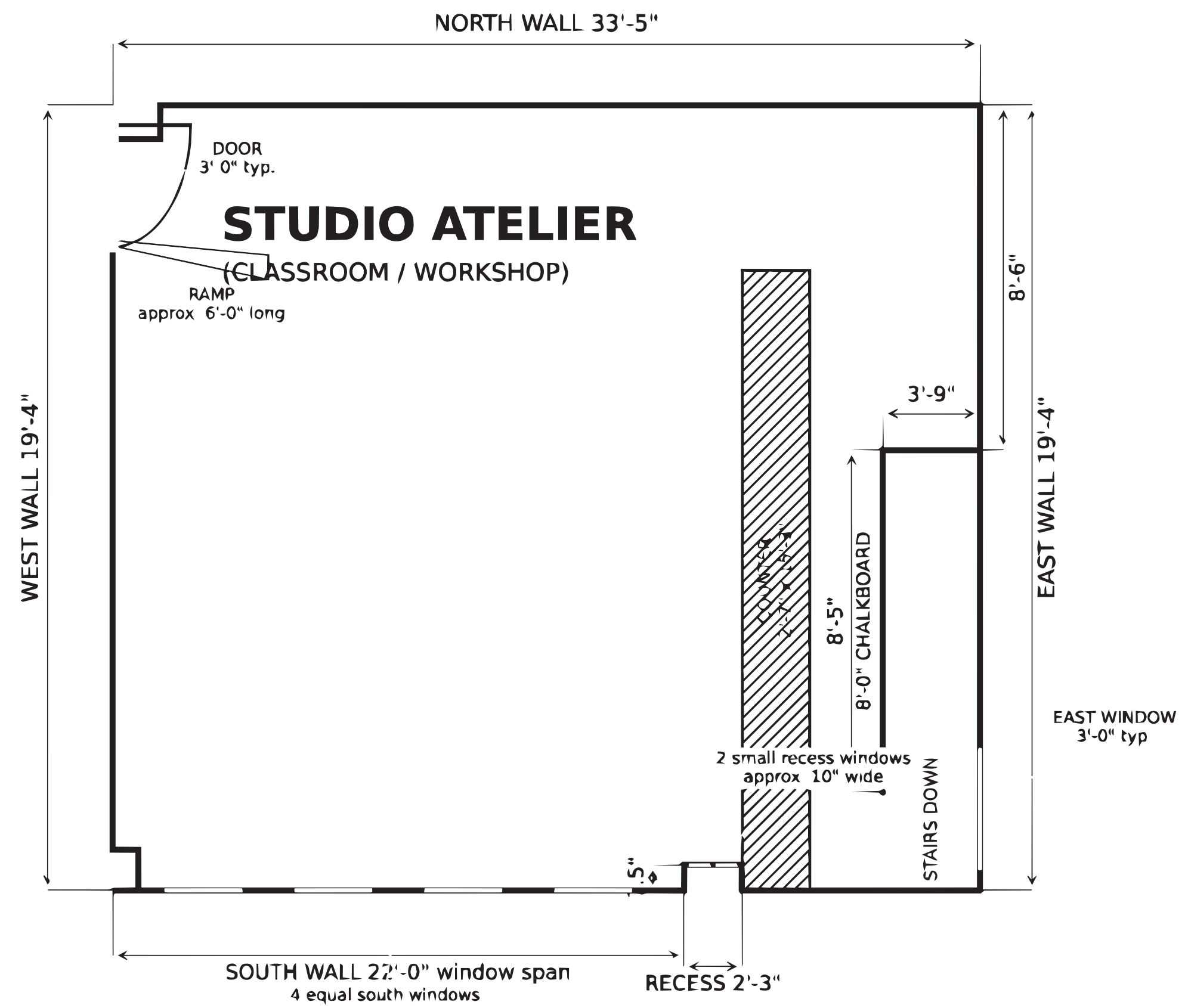
SCALE
1:24



NOTES

All dimensions shown are approximate.
 Approx. overall area 145 sq ft
 Door shown as standard 3' 0" single leaf.
 Window shown as standard 3' - 0" wide opening.

PLAN VIEW	
Studio 214 Erie Labor Temple Approximate field demenions	SCALE 1:24

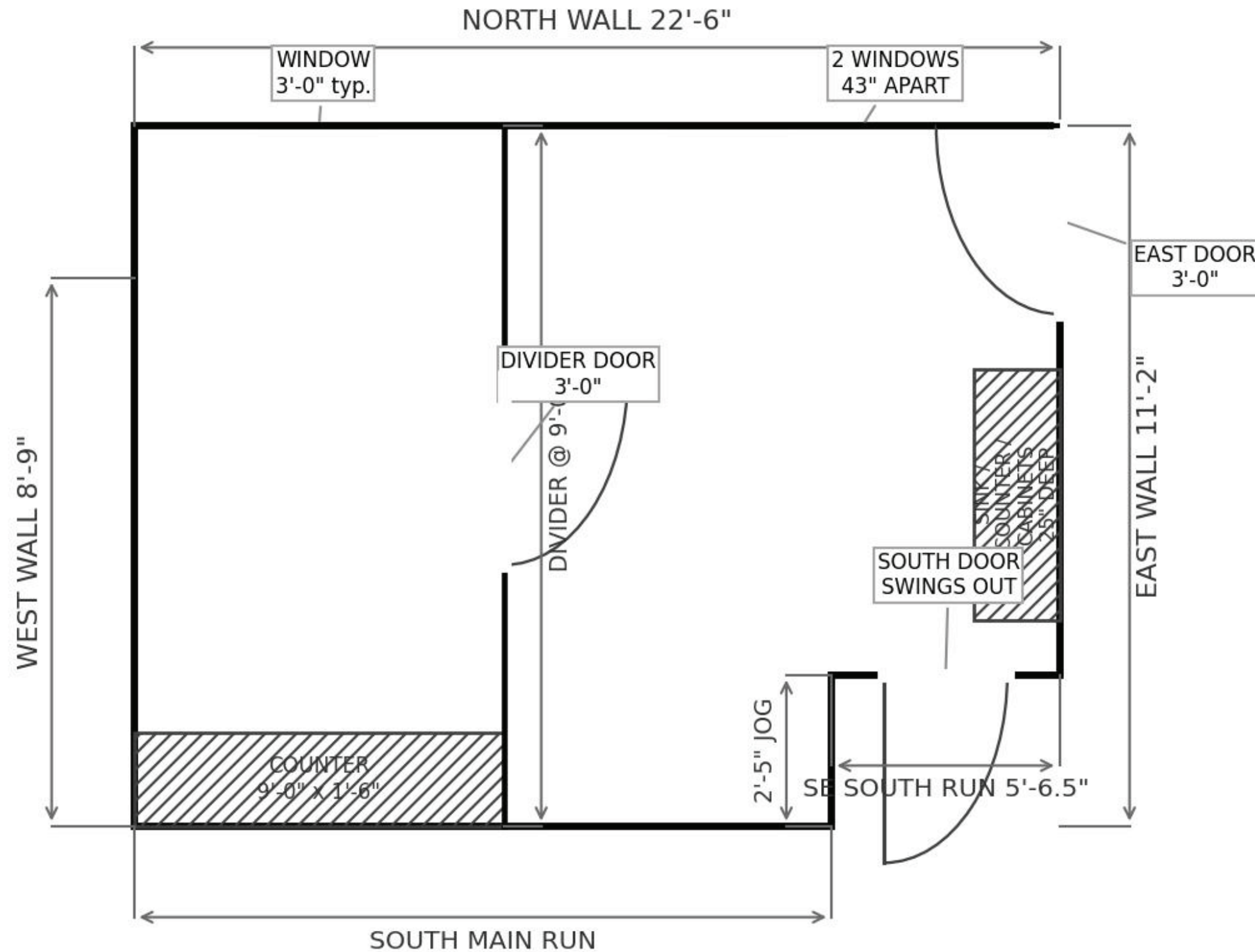


NOTES

- All dimensions shown are approximate.
- Approx. overall area 642 sq ft
- Features 8' chalkboard.
- Features 15'+ built-in counter.
- Features gradual slope ramp at entrance/exit.
- Door shown as standard 3' 0" single leaf.
- Window shown as standard 3' - 0" wide opening.

PLAN VIEW	
ATELIR // Classroom Erie Labor Temple Approximate field demenions	SCALE 1:24

KITCHENETTE



NOTES

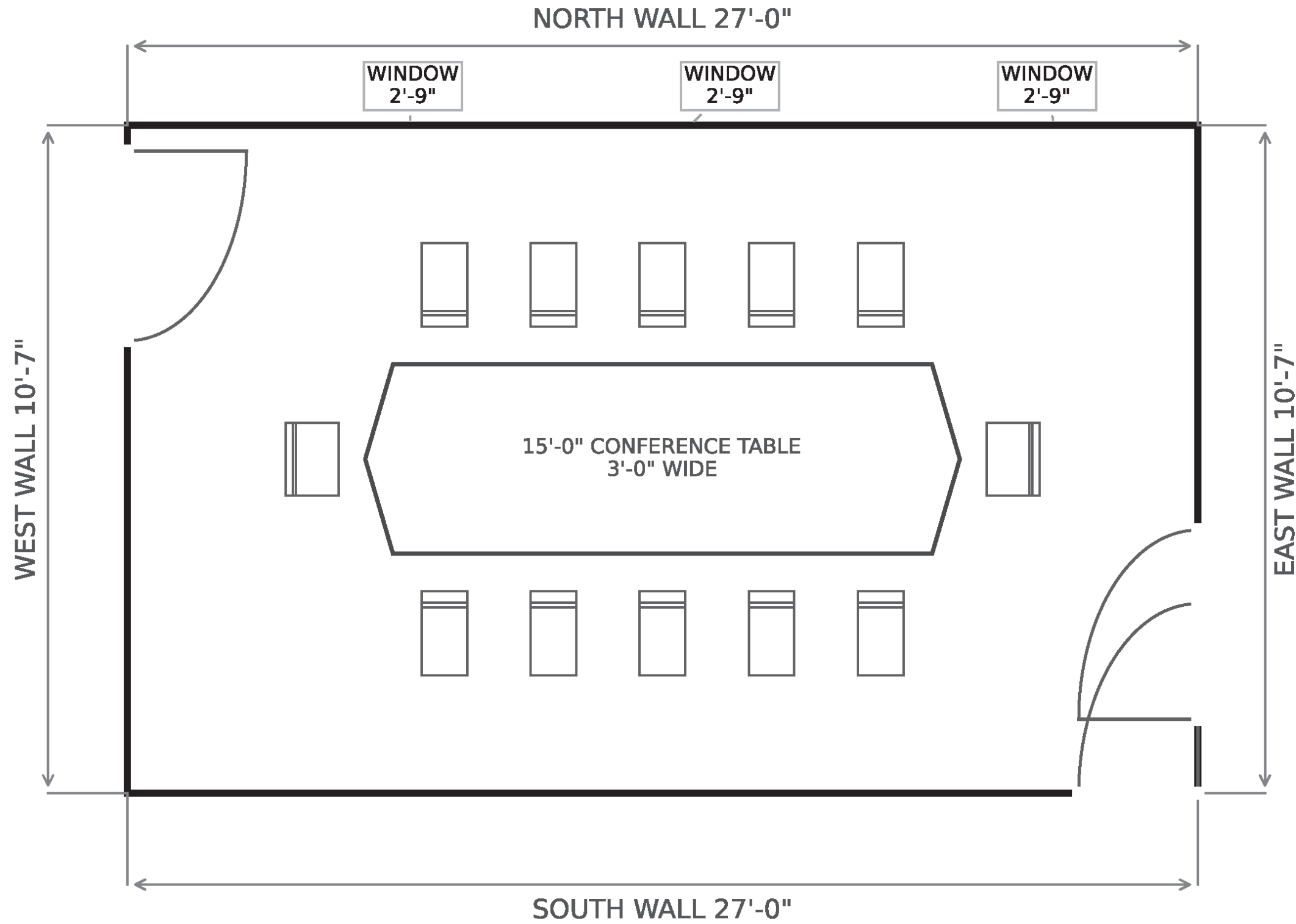
- All dimensions shown are approximate.
- Approx. overall area 238 sq ft
- Two-room layout
- Features:
 - East wall sink/counter/cabinets, 25" deep.
 - Additional 9' counter in West room.
- Door shown as standard 3' 0" single leaf.
- Window shown as standard 3' - 0" wide opening.

PLAN VIEW

Kitchenette
Erie Labor Temple
Approximate field demenions

SCALE
1:24

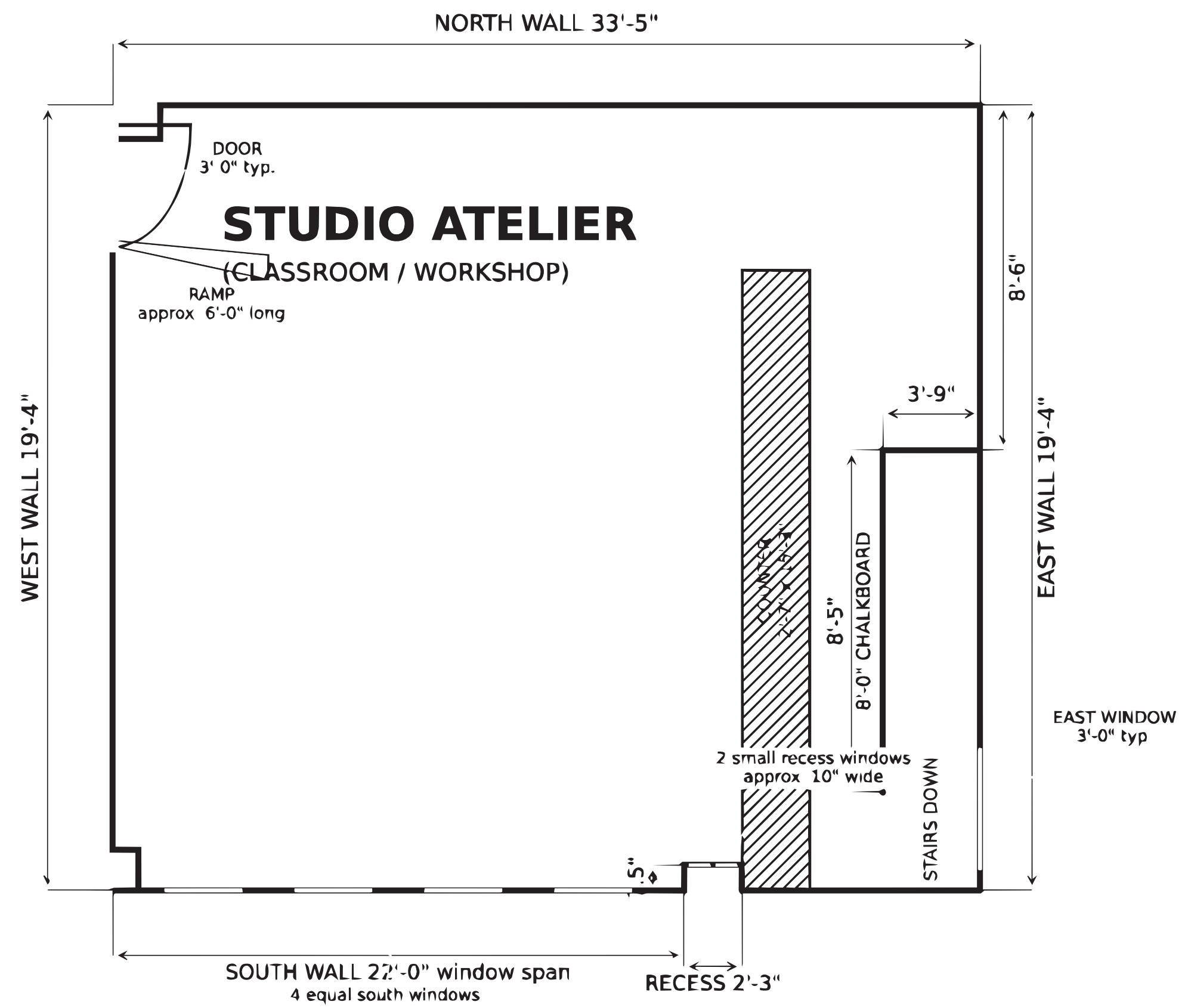
CONFERENCE / BOARD ROOM



NOTES

All dimensions shown are approximate.
 Approx. overall area 286 sq ft
 Status: Furnished boardroom layout
 Features:
 - Conference table: 15' x 3'
 - 12 chairs total (more if needed)
 - Kitchenette available adjacent West wall
 Door shown as standard 3' 0" single leaf.
 Window shown as standard 3' - 0" wide opening.

PLAN VIEW	
Conference // Board Room Erie Labor Temple Approximate field demenions	SCALE 1:24

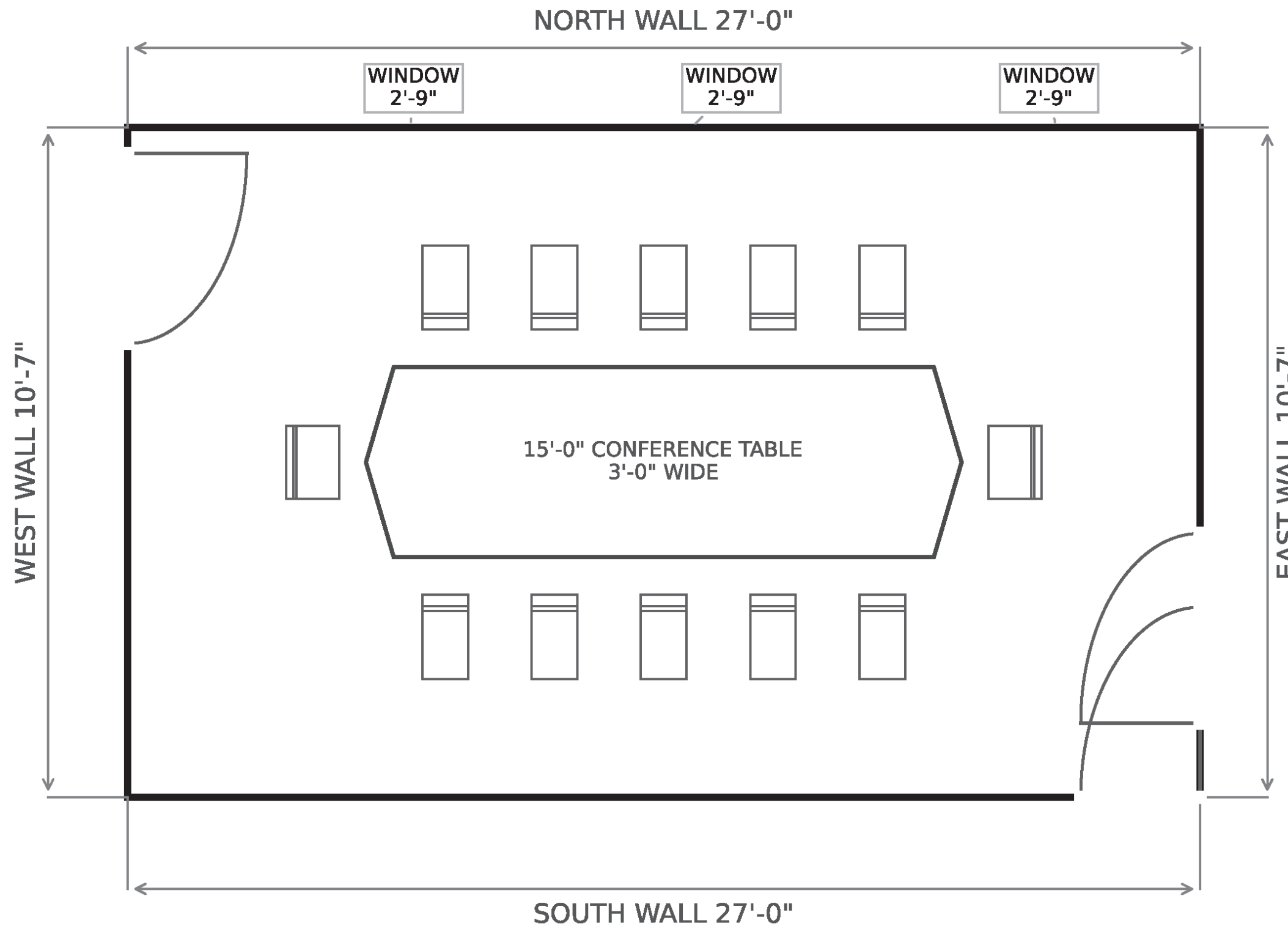


NOTES

All dimensions shown are approximate.
 Approx. overall area 642 sq ft
 Features 8' chalkboard.
 Features 15'+ built-in counter.
 Features gradual slope ramp at entrance/exit.
 Door shown as standard 3' 0" single leaf.
 Window shown as standard 3' - 0" wide opening.

PLAN VIEW	
ATELIR // Classroom Erie Labor Temple Approximate field demenions	SCALE 1:24

CONFERENCE / BOARD ROOM



NOTES

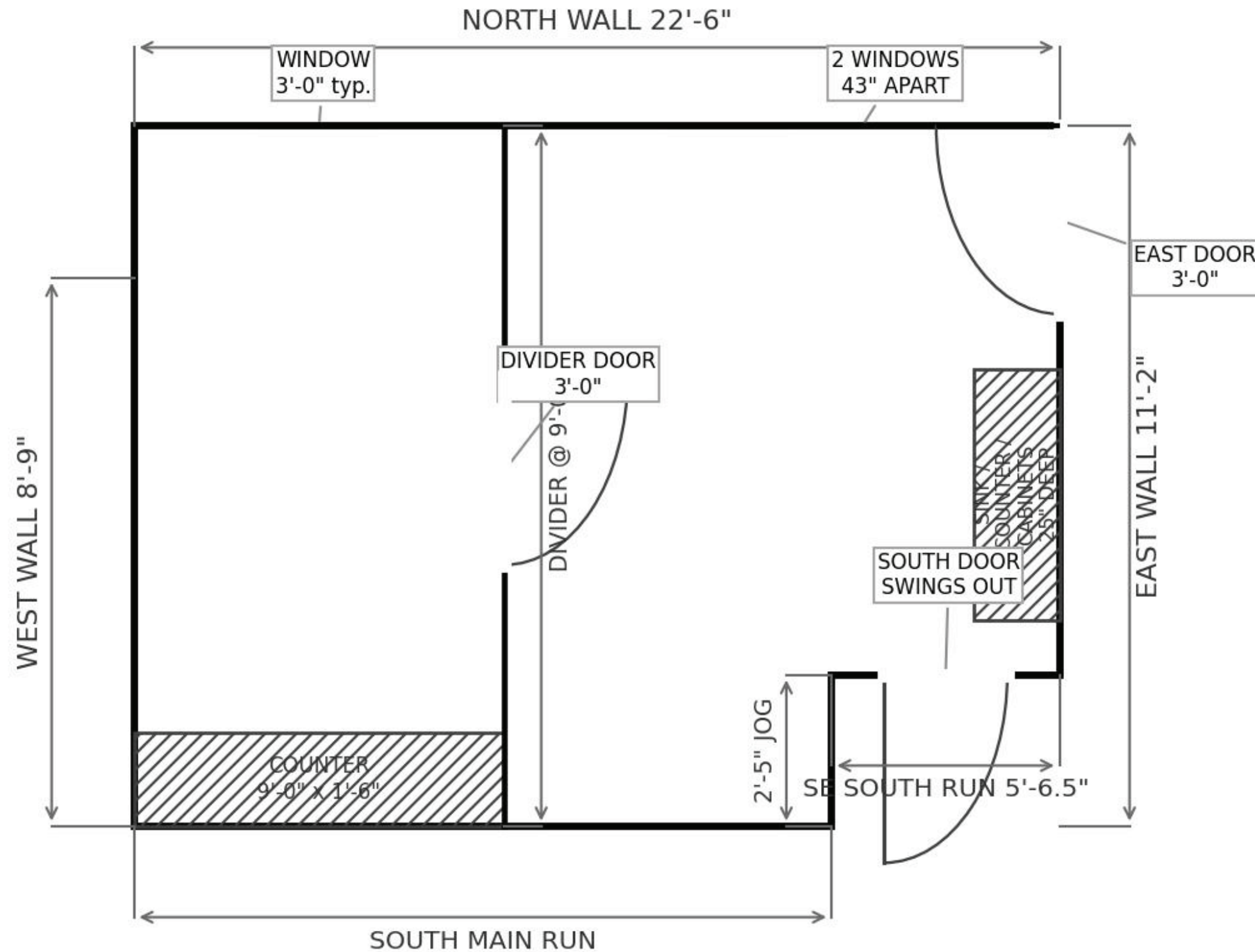
All dimensions shown are approximate.
 Approx. overall area 286 sq ft
 Status: Furnished boardroom layout
 Features:
 - Conference table: 15' x 3'
 - 12 chairs total (more if needed)
 - Kitchenette available adjacent West wall
 Door shown as standard 3' 0" single leaf.
 Window shown as standard 3' - 0" wide opening.

PLAN VIEW

Conference // Board Room
 Erie Labor Temple
 Approximate field demenions

SCALE
 1:24

KITCHENETTE



NOTES

- All dimensions shown are approximate.
- Approx. overall area 238 sq ft
- Two-room layout
- Features:
 - East wall sink/counter/cabinets, 25" deep.
 - Additional 9' counter in West room.
- Door shown as standard 3' 0" single leaf.
- Window shown as standard 3' - 0" wide opening.

PLAN VIEW	
Kitchenette Erie Labor Temple Approximate field demenions	SCALE 1:24